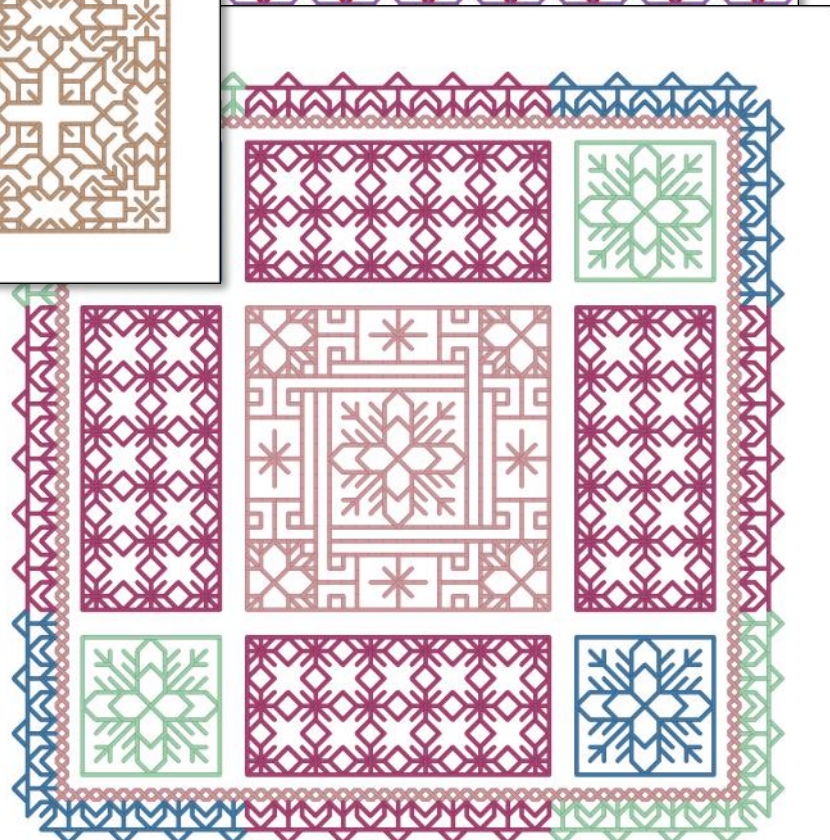
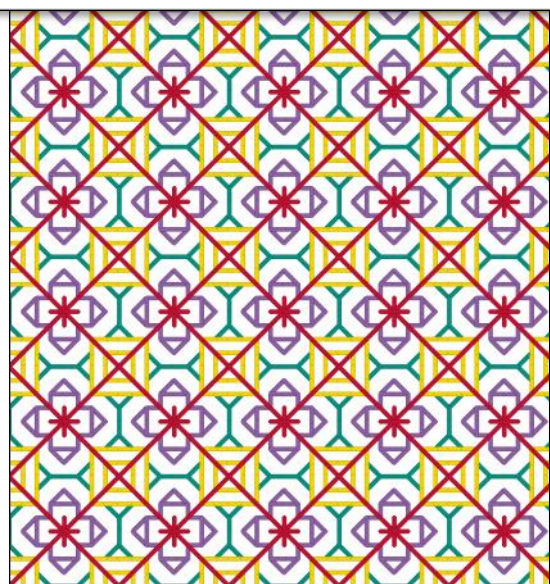
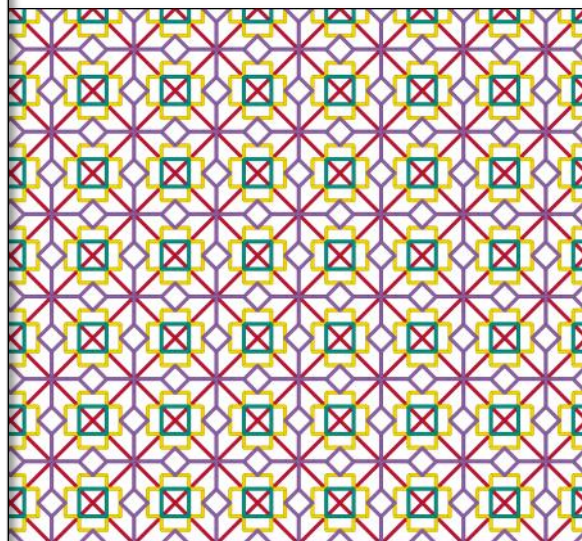
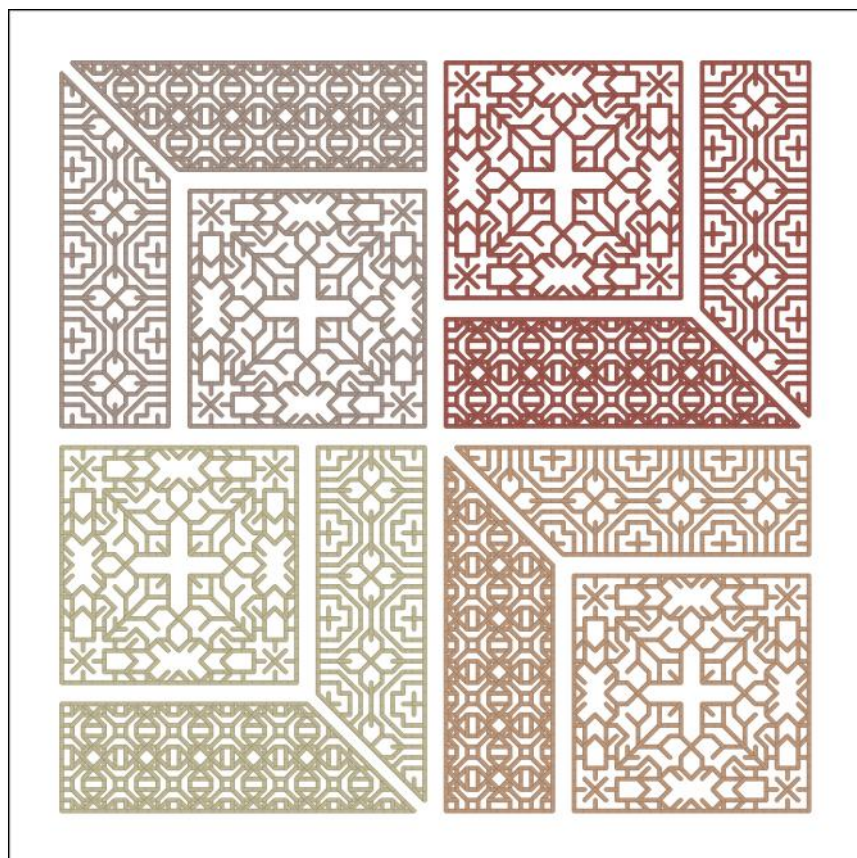


STITCHIN'SPIRATION



# COLOR HARMONY EXAMPLES

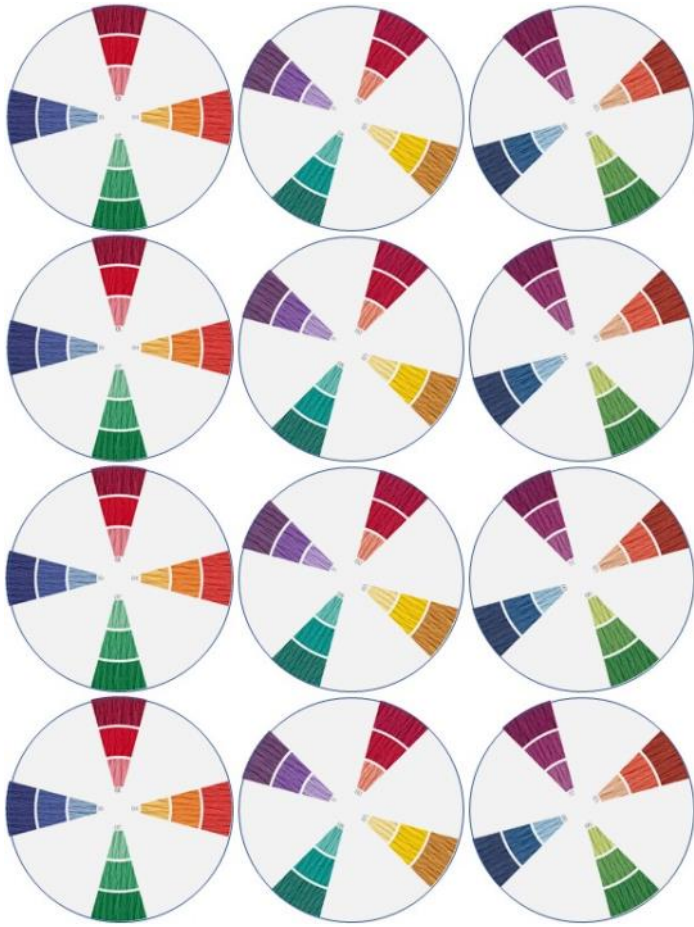
## TETRADIC (SQUARED)



DESIGNS BY SALLY RUDKIN



# COLOR HARMONY: TETRADIC (SQUARED)



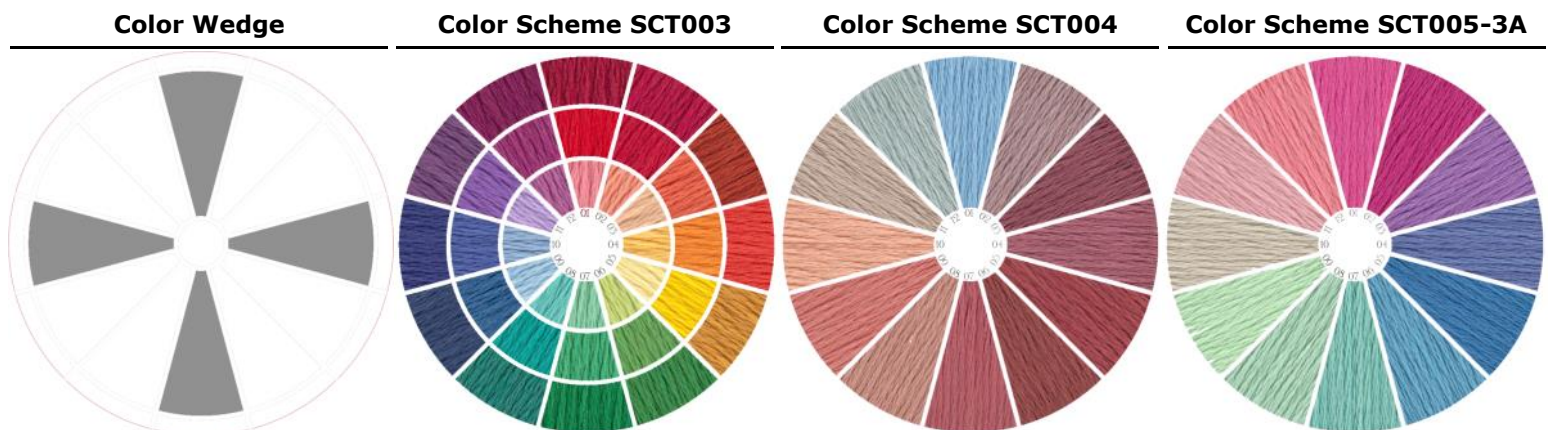
The TETRADIC (SQUARED) color harmony showcases two sets of COMPLEMENTARY colors. With this dynamic, it has a lot of tension to it. While it offers the most variety of all the color harmonies, and can be an eye-catching scheme, it also lacks focus. A good way to use this is to have one of the colors as the main color, and then use the other three colors as accents. Again, you might need to pay attention to the fabric choice for this one, and make sure that all the threads will show up on the fabric.

Stop by our website at <https://stitchinspiration.com/category/simply-color/> and find other color / thread schemes to play with.

Download the web cards for BOTH the color harmonies, as well as the thread schemes—and play to your hearts content!

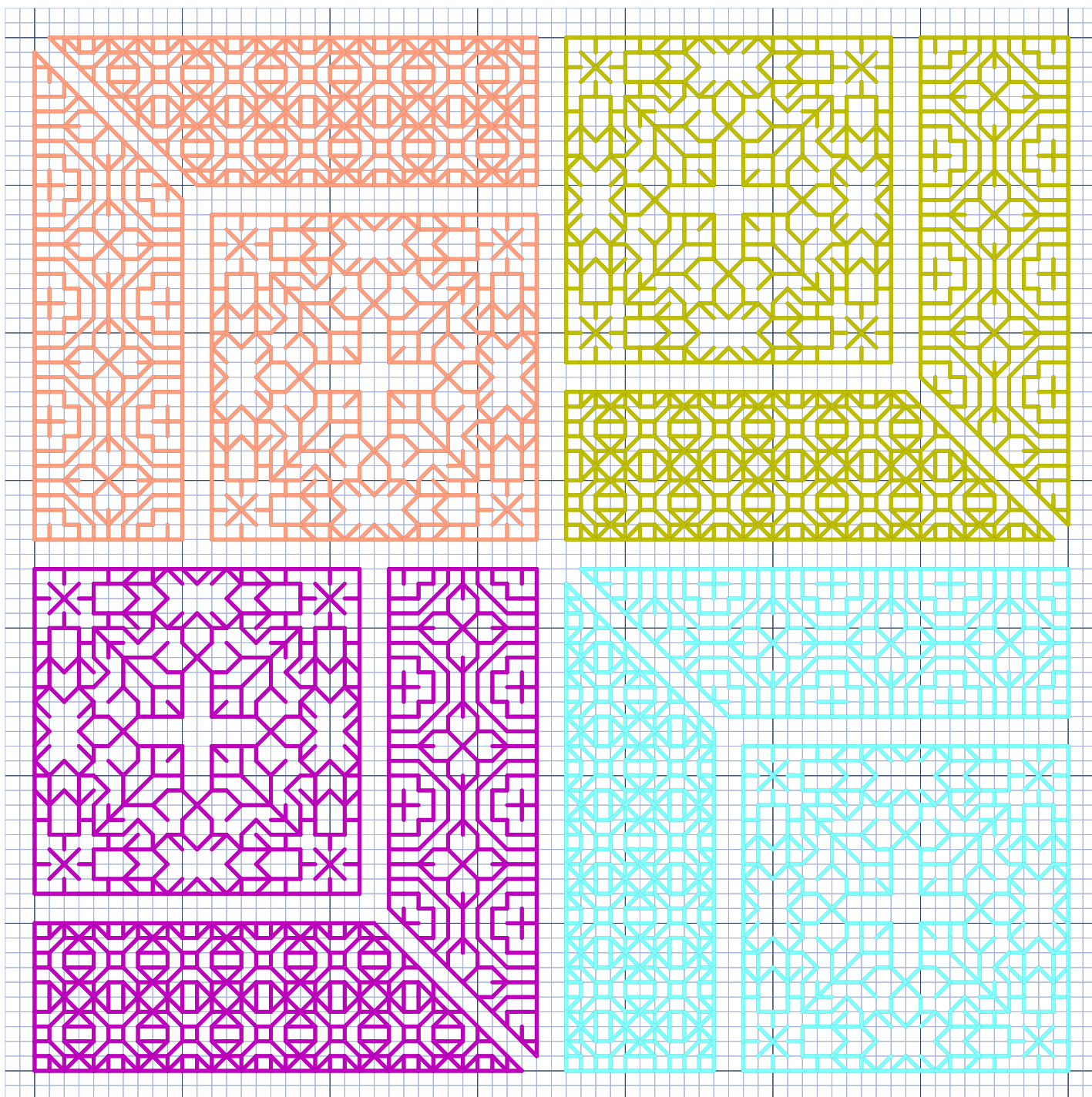
You have NO limit to how you can play with color, and can put your own touch to ALL your needlework projects.

Color Wedge	SCT003	SCT004	SCT005-3A
01 <b>A</b>	666	3755	602
02 <b>B</b>	349	3861	718
03 <b>C</b>	721	315	553
04 <b>D</b>	741	3726	3807
05 <b>E</b>	444	3721	517
06 <b>F</b>	702	3858	518
07 <b>G</b>	911	3722	993
08 <b>H</b>	3812	407	564
09 <b>I</b>	312	3778	13
10 <b>J</b>	792	3771	644
11 <b>K</b>	208	3782	224
12 <b>L</b>	34	927	760
01A <b>8</b>	816	322	600
01B <b>9</b>	760	3841	604



This pattern provided for FREE from Sally Rudkin and Stitchin'spiration for your personal enjoyment. Needlework shops are free to distribute this chart to their customers and classes as they wish. Also, it is available to stitchers that stitch for charity. CHART MUST NOT BE SOLD OR PROFIT MADE FROM IT, OTHER THAN FOR CHARITABLE MEANS.

# NBB-2315— BASED ON COLOR WHEEL SCT004

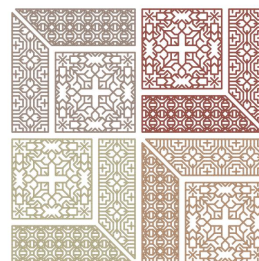


## PROJECT SIZE

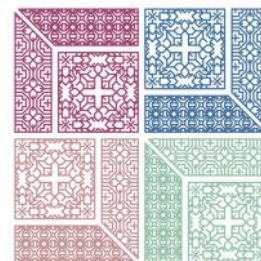
<b>Stitches</b>	70 x 70
<b>14 Count</b>	5" x 5"
<b>16 Count</b>	4-3/8" x 4-3/8"
<b>18 Count</b>	3-7/8" x 3-7/8"
<b>22 Count</b>	3-1/8" x 3-1/8"

## Color Wedge

<b>02</b>	<b>B</b>	—
<b>05</b>	<b>E</b>	—
<b>08</b>	<b>H</b>	—
<b>11</b>	<b>K</b>	—



Color Wedges SCT004

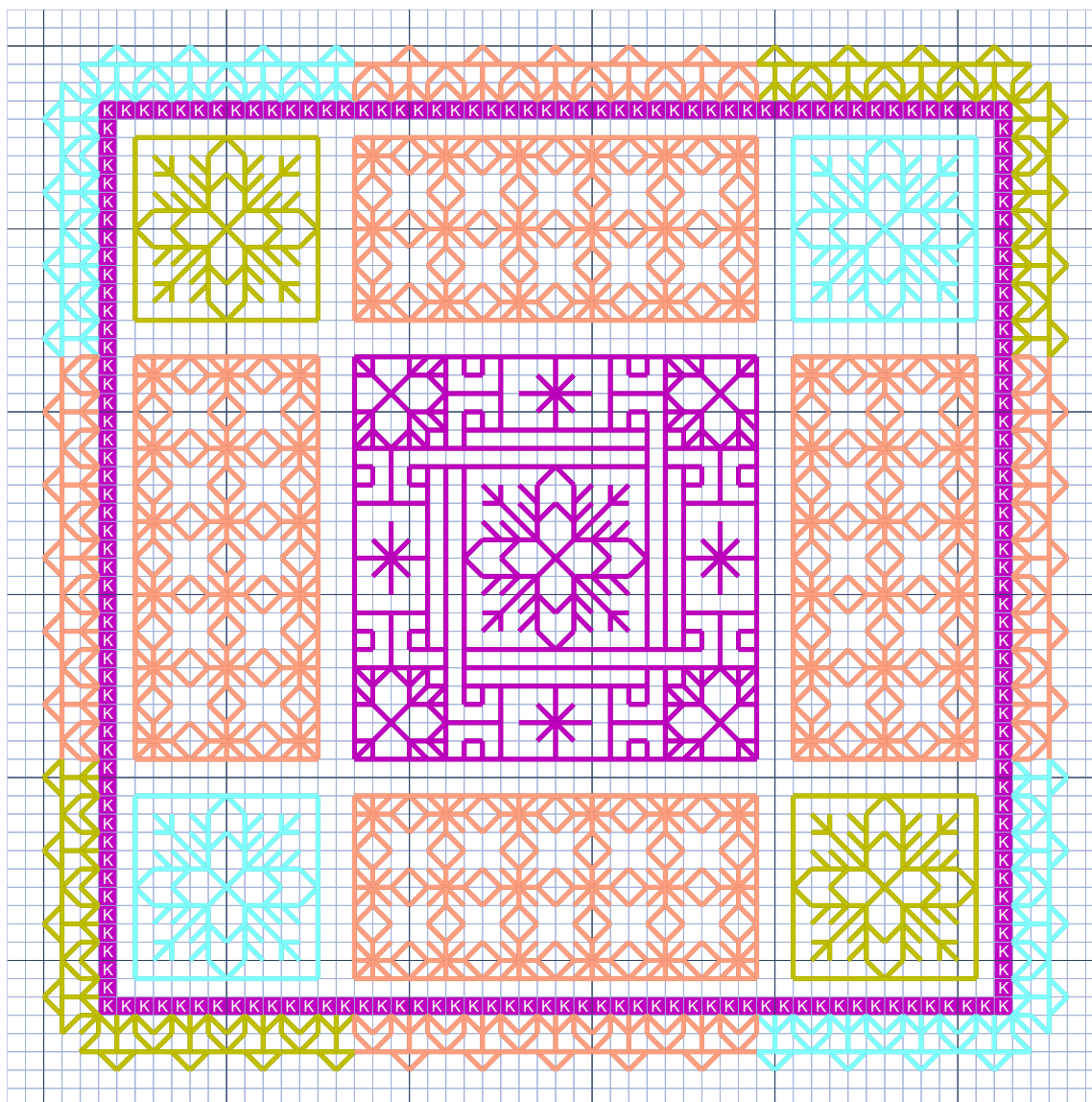


Color Wedges SCT005-3A

For this design, I simply played with the four colors, and stitched each block a different color. You might want to play with the color location, and see what makes you

This pattern provided for FREE from Sally Rudkin and Stitchin'spiration for your personal enjoyment. Needlework shops are free to distribute this chart to their customers and classes as they wish. Also, it is available to stitchers that stitch for charity.  
CHART MUST NOT BE SOLD OR PROFIT MADE FROM IT, OTHER THAN FOR CHARITABLE MEANS.

# NBB-6001— BASED ON COLOR WHEEL SCT005-3A



## PROJECT SIZE

<b>Stitches</b>	56 x 56
<b>14 Count</b>	4" x 4"
<b>16 Count</b>	3-1/2" x 3-1/2"
<b>18 Count</b>	3" x 3"
<b>22 Count</b>	2-1/2" x 2-1/2"

## Color Wedge

<b>02</b>	<b>B</b>	—
<b>05</b>	<b>E</b>	—
<b>08</b>	<b>H</b>	—
<b>11</b>	<b>K</b>	—

With this design, I did each of the blocks a different color. I then used the block colors to tell me where to stitch the border colors. I think it really looks good, playing the border colors in contrast to the internal blocks.



Color Wedges SCT004

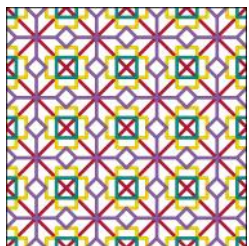


Color Wedges SCT005-3A

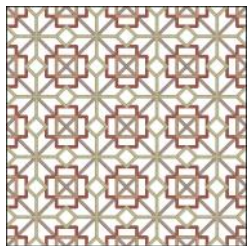
This pattern provided for FREE from Sally Rudkin and Stitchin'spiration for your personal enjoyment. Needlework shops are free to distribute this chart to their customers and classes as they wish. Also, it is available to stitchers that stitch for charity.  
CHART MUST NOT BE SOLD OR PROFIT MADE FROM IT, OTHER THAN FOR CHARITABLE MEANS.



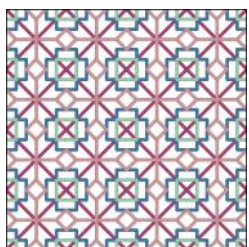
# FILLS — BASED ON COLOR WHEEL



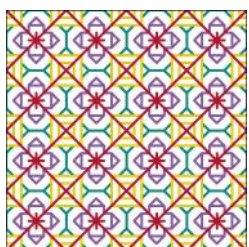
Color Wedges SCT003



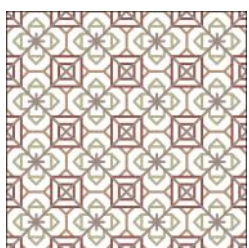
Color Wedges SCT004



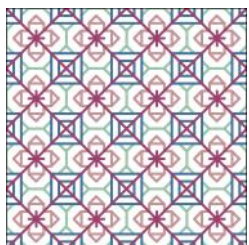
Color Wedges SCT005-3A



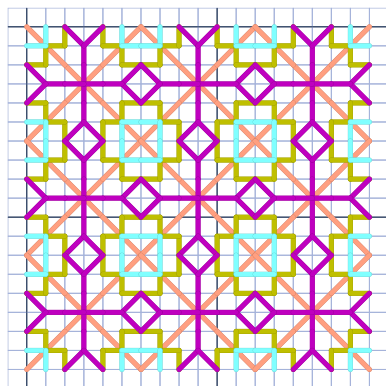
Color Wedges SCT003



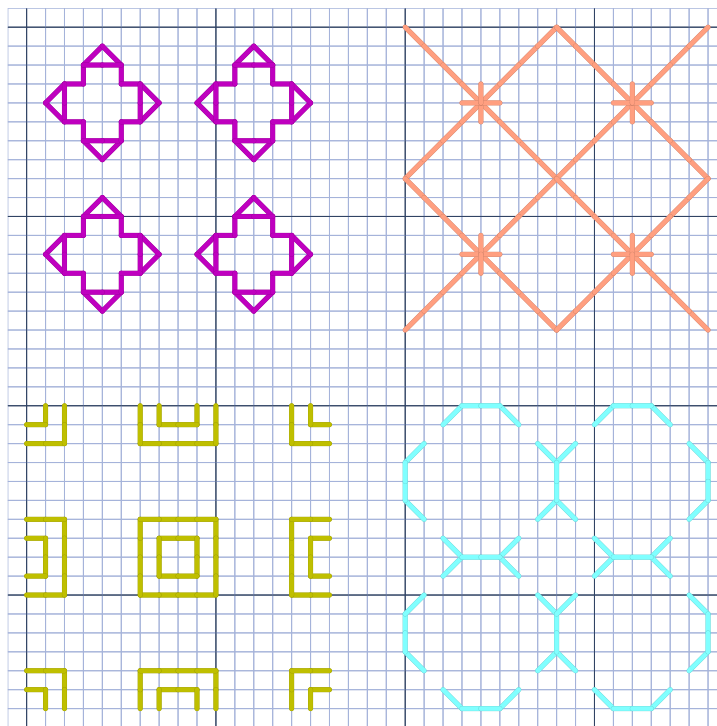
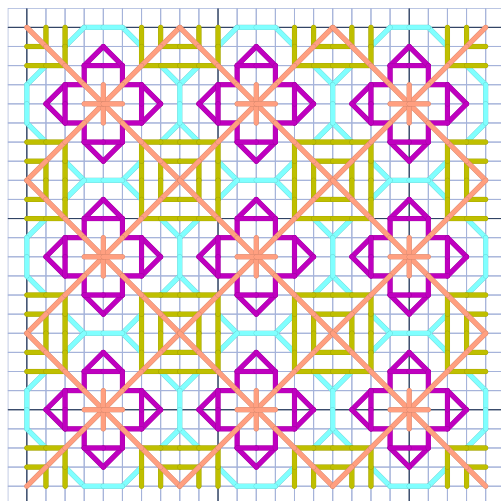
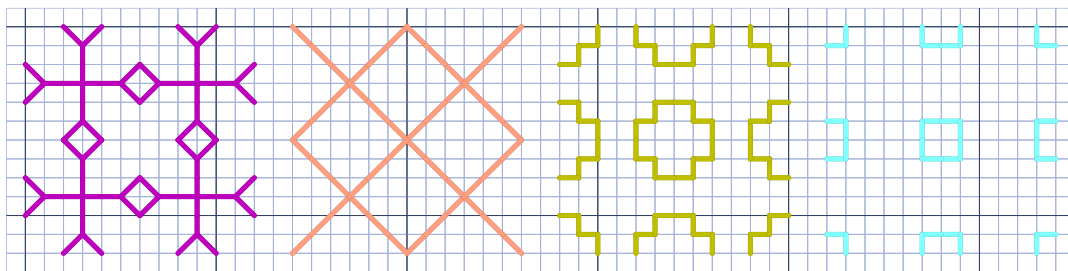
Color Wedges SCT004



Color Wedges SCT005-3A



For both of these designs, I just broke down the black-work fill repeat down into three different steps, and played with how I would use the color in each. They both turned out beautiful!



## Color Wedge

- 02 B ———
- 05 E ———
- 08 H ———
- 11 K ———

## STITCHIN'SPIRATION



POST OFFICE BOX 1571  
MECHANICSVILLE, VA 23116 USA  
(804) 368-7751  
ADMIN@STITCHINSPIRATION.COM  
WWW.STITCHINSPIRATION.COM

© 2021 DESIGNS BY SALLY RUDKIN ALL RIGHTS RESERVED.

This pattern provided for FREE from Sally Rudkin and Stitchin'spiration for your personal enjoyment. Needlework shops are free to distribute this chart to their customers and classes as they wish. Also, it is available to stitchers that stitch for charity.  
CHART MUST NOT BE SOLD OR PROFIT MADE FROM IT, OTHER THAN FOR CHARITABLE MEANS.

