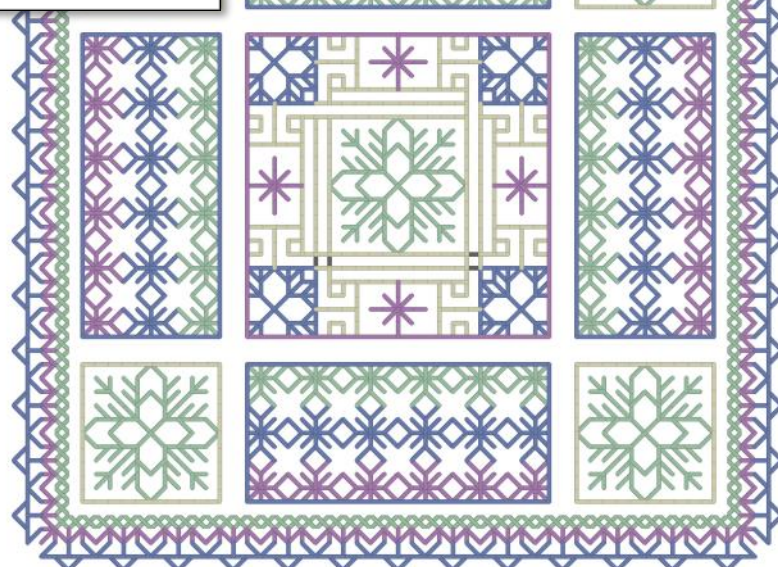
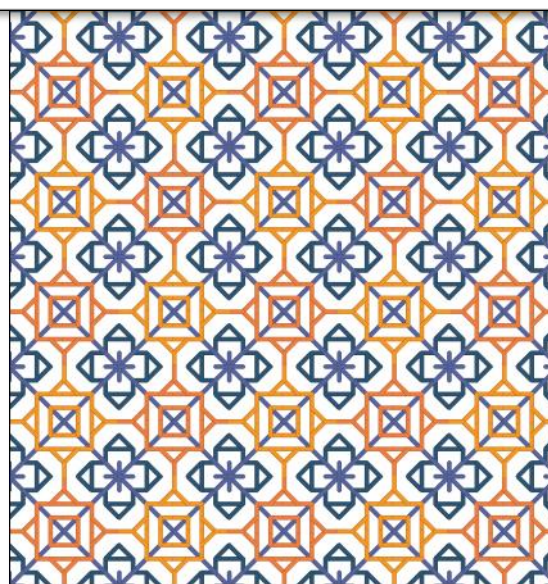
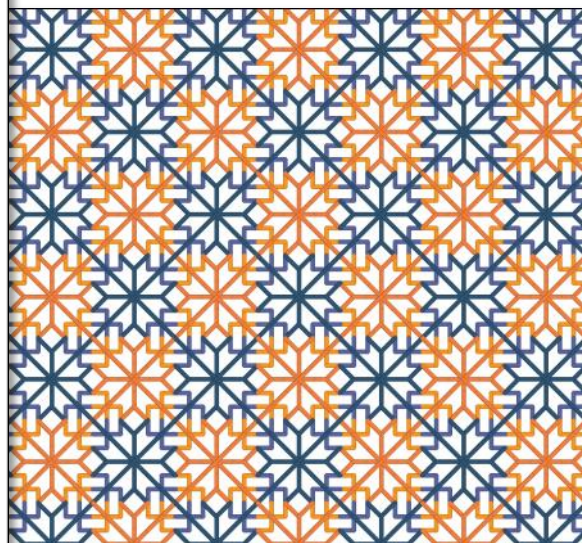
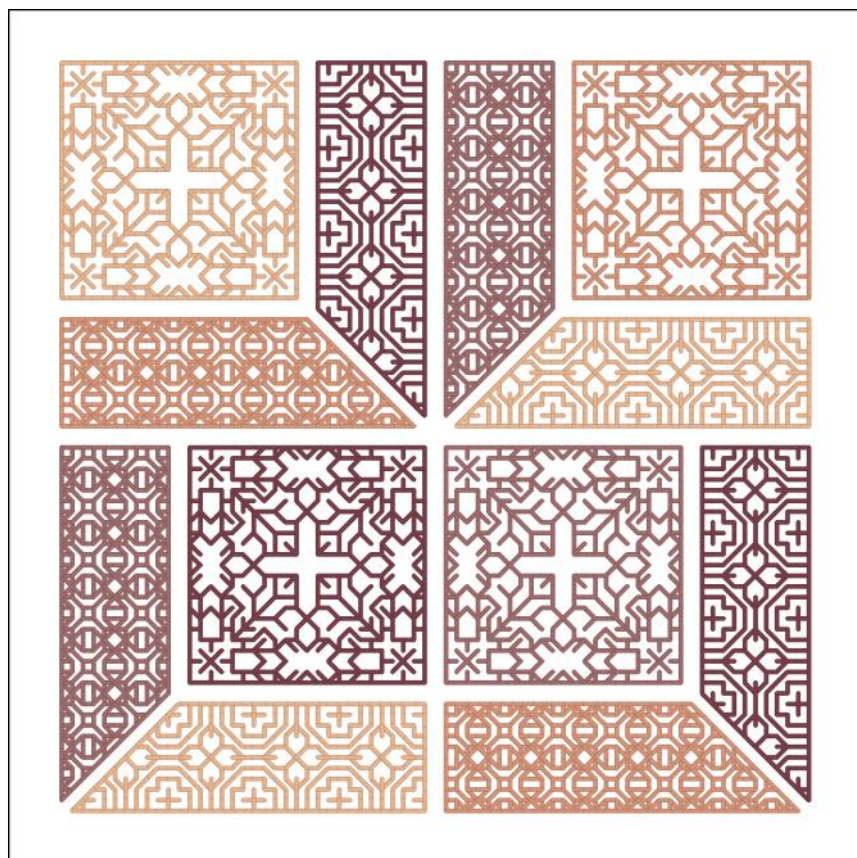


STITCHIN'SPIRATION



COLOR HARMONY EXAMPLES

DOUBLE COMPLEMENTARY



DESIGNS BY SALLY RUDKIN

COLOR HARMONY: DOUBLE COMPLIMENTARY



The DOUBLE COMPLIMENTARY color harmony takes the COMPLIMENTARY color harmony that we've already discussed, and simply doubles it. You still get the benefit of the contrasting colors, but also get the benefit of colors next to each other. It's almost the best of both world, and should be fun to play with.

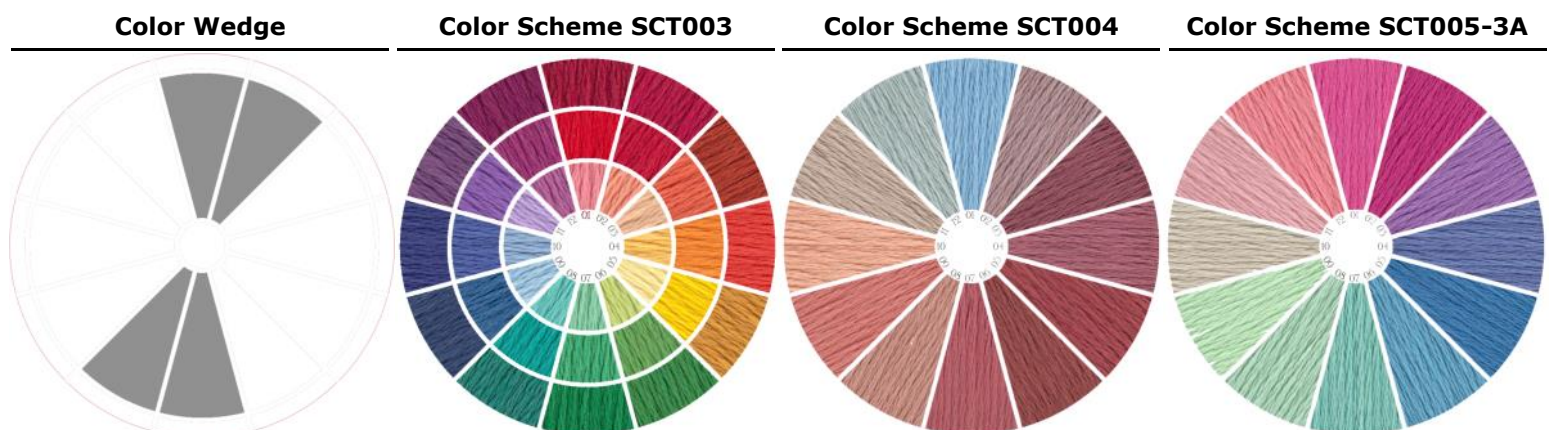
As with the COMPLIMENTARY color harmony, be careful with fabric selection for your project. You can get a wide range of colors, so confirm that the fabric will be dark or light enough for you.

Stop by our website at <https://stitchinspiration.com/category/simply-color/> and find other color / thread schemes to play with.

Download the web cards for BOTH the color harmonies, as well as the thread schemes—and play to your hearts content!

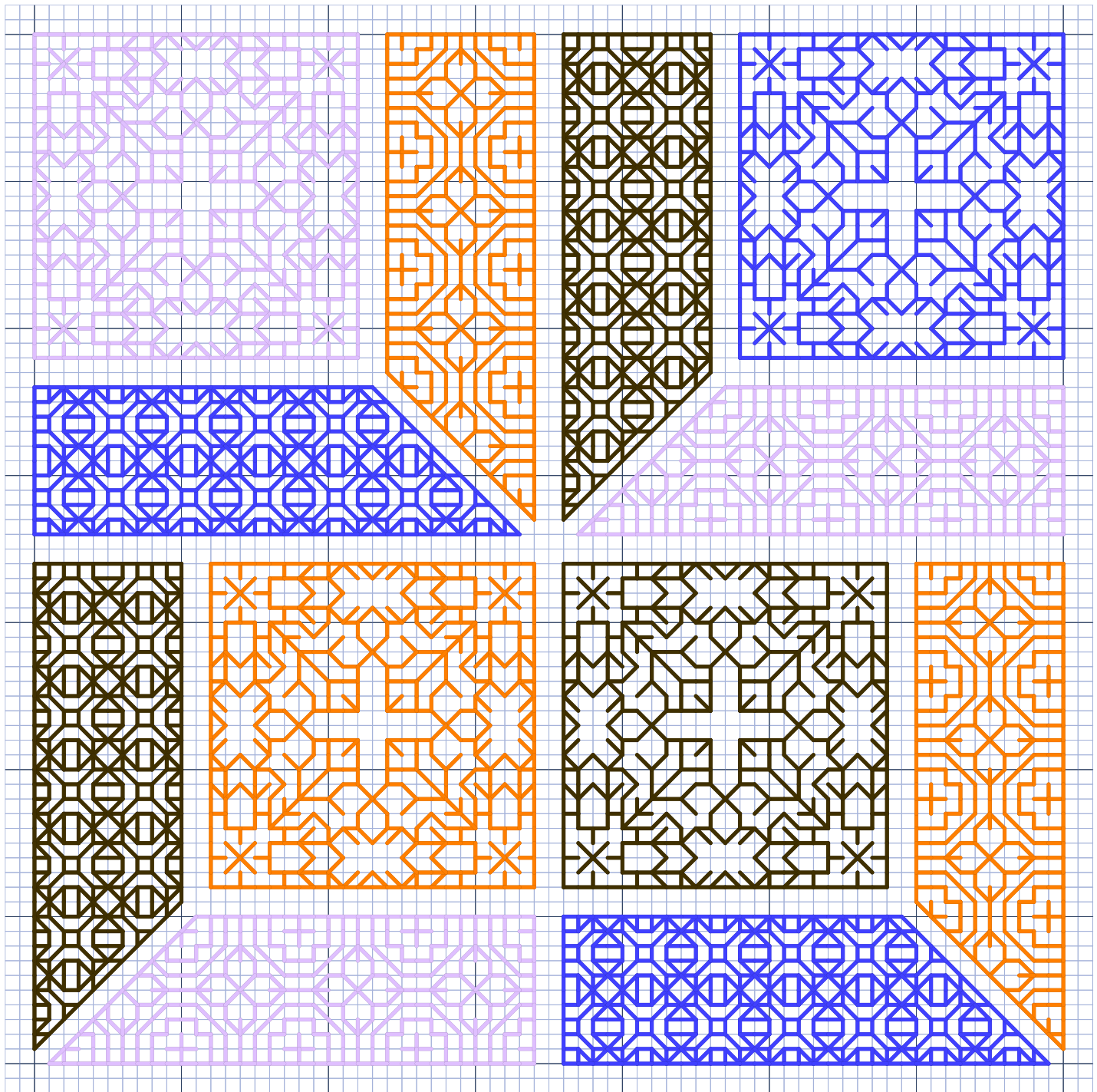
You have NO limit to how you can play with color, and can put your own touch to ALL your needlework projects.

Color Wedge	SCT003	SCT004	SCT005-3A
01 A	666	3755	602
02 B	349	3861	718
03 C	721	315	553
04 D	741	3726	3807
05 E	444	3721	517
06 F	702	3858	518
07 G	911	3722	993
08 H	3812	407	564
09 I	312	3778	13
10 J	792	3771	644
11 K	208	3782	224
12 L	34	927	760
01A 8	816	322	600
01B 9	760	3841	604



This pattern provided for FREE from Sally Rudkin and Stitchin'spiration for your personal enjoyment. Needlework shops are free to distribute this chart to their customers and classes as they wish. Also, it is available to stitchers that stitch for charity.
CHART MUST NOT BE SOLD OR PROFIT MADE FROM IT, OTHER THAN FOR CHARITABLE MEANS.

NBB-2315— BASED ON COLOR WHEEL SCT004

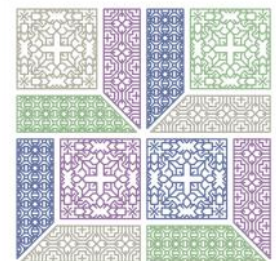
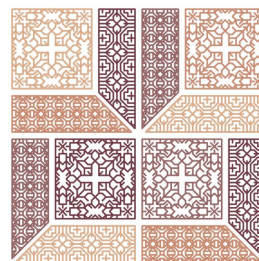


PROJECT SIZE

Stitches	70 x 70
14 Count	5" x 5"
16 Count	4-3/8" x 4-3/8"
18 Count	3-7/8" x 3-7/8"
22 Count	3-1/8" x 3-1/8"

Color Wedge

03	C	Orange
04	D	Brown
09	I	Blue
10	J	Light Purple



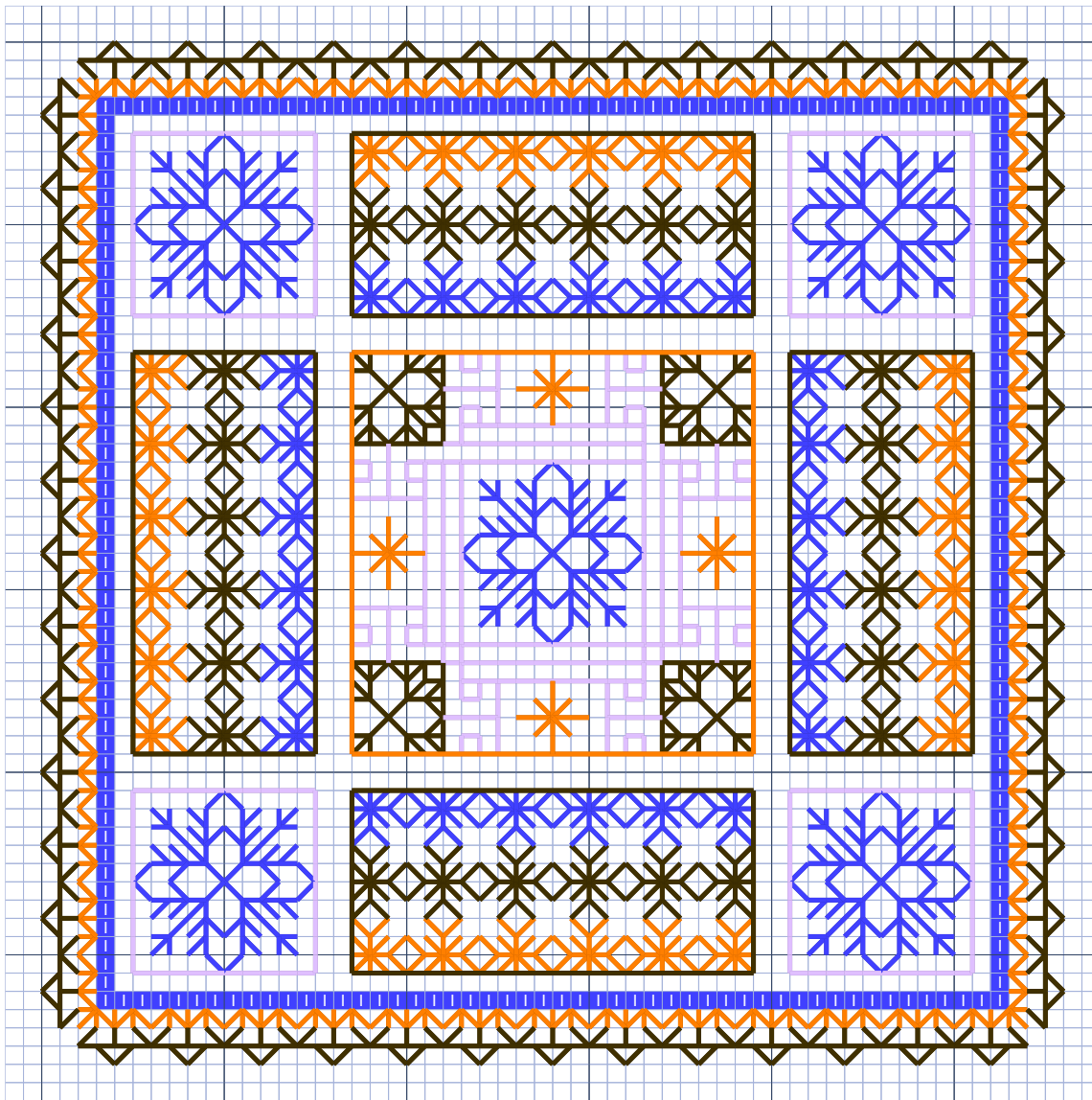
Color Wedges SCT004

Color Wedges SCT005-3A

I flipped this design around a bit, and played with the color blocks. With the simplicity of the design, I think it came out pretty!

This pattern provided for FREE from Sally Rudkin and Stitchin'spiration for your personal enjoyment. Needlework shops are free to distribute this chart to their customers and classes as they wish. Also, it is available to stitchers that stitch for charity.
CHART MUST NOT BE SOLD OR PROFIT MADE FROM IT, OTHER THAN FOR CHARITABLE MEANS.

NBB-6001— BASED ON COLOR WHEEL SCT005-3A



PROJECT SIZE

Stitches	56 x 56
14 Count	4" x 4"
16 Count	3-1/2" x 3-1/2"
18 Count	3" x 3"
22 Count	2-1/2" x 2-1/2"

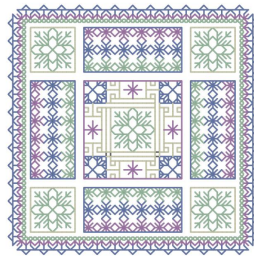
Color Wedge

03	C	—
04	D	—
09	I	—
10	J	—

For this design I played around with it, and I think the end result turns out interesting. I played around with the colors in the large and the small square areas. But, in the rectangular areas, I played around with the fill, and treated them as stripes. Then, on the outer border, I used three of the four colors, tying them all together.



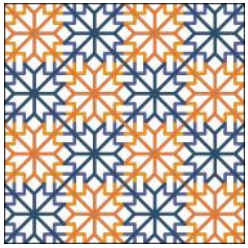
Color Wedges SCT004



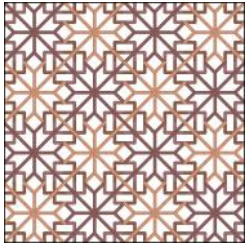
Color Wedges SCT005-3A

This pattern provided for FREE from Sally Rudkin and Stitchin'spiration for your personal enjoyment. Needlework shops are free to distribute this chart to their customers and classes as they wish. Also, it is available to stitchers that stitch for charity.
CHART MUST NOT BE SOLD OR PROFIT MADE FROM IT, OTHER THAN FOR CHARITABLE MEANS.

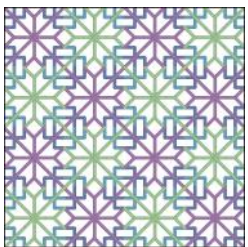
FILLS — BASED ON COLOR WHEEL SCT003



Color Wedges SCT003



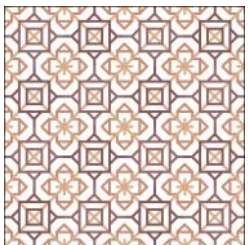
Color Wedges SCT004



Color Wedges SCT005-



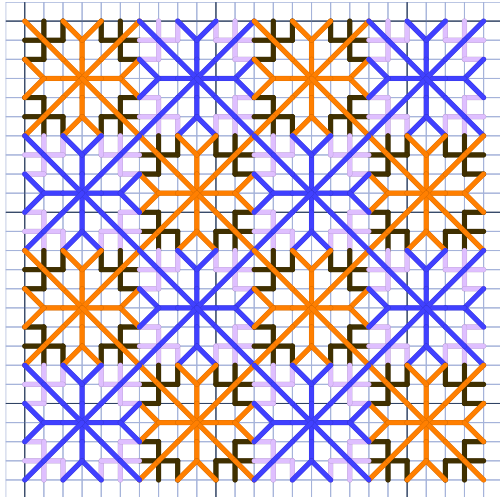
Color Wedges SCT003



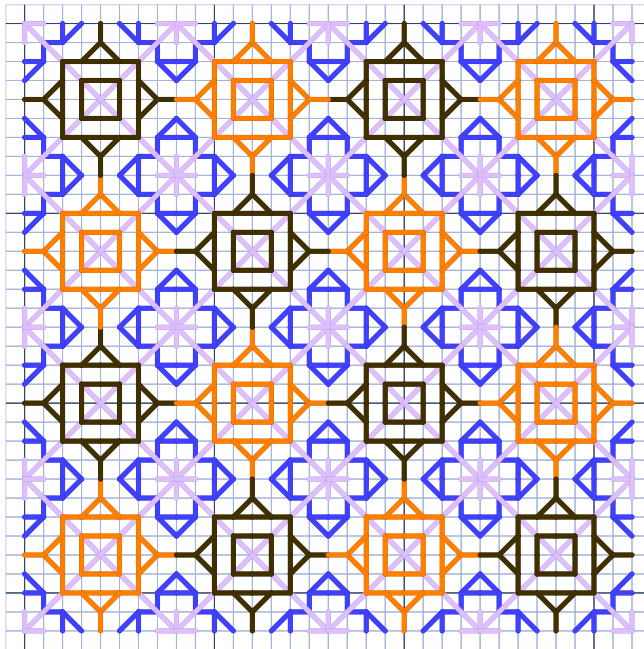
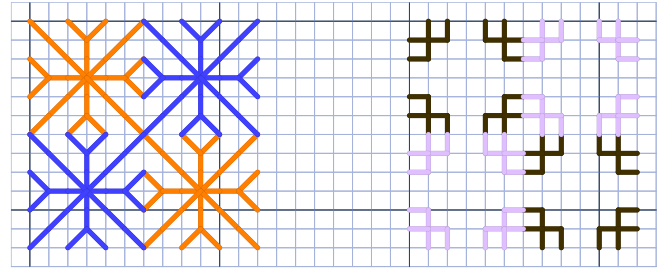
Color Wedges SCT004



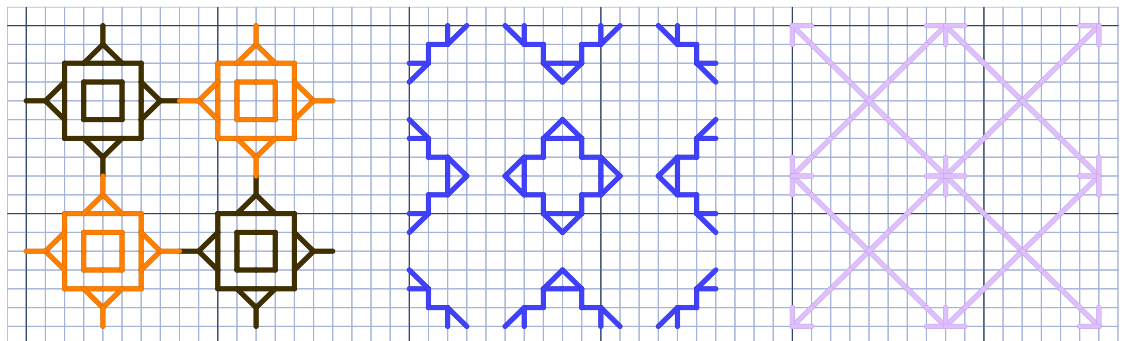
Color Wedges SCT005-3A



Similar to the COMPLIMENTARY color harmony, I took the blackwork fill and checkerboarded it. But, I broke the fill down so that both the sections include the two thread colors. A little bit more complicated, but I think the end result is quite intriguing.



I've broken this fill out in such a way, that the end result seems to move subtly. As you can see I broke the first segment out, and checkerboarded the one pair of color. Then, I took the second set of colors, and used those both across the board to pull it all together. The end result - well it speaks for itself!



STITCHIN'SPIRATION



POST OFFICE BOX 1571
MECHANICSVILLE, VA 23116 USA
(804) 368-7751
ADMIN@STITCHINSPIRATION.COM
WWW.STITCHINSPIRATION.COM

© 2021 DESIGNS BY SALLY RUDKIN ALL RIGHTS RESERVED.

This pattern provided for FREE from Sally Rudkin and Stitchin'spiration for your personal enjoyment. Needlework shops are free to distribute this chart to their customers and classes as they wish. Also, it is available to stitchers that stitch for charity.

CHART MUST NOT BE SOLD OR PROFIT MADE FROM IT, OTHER THAN FOR CHARITABLE MEANS.

