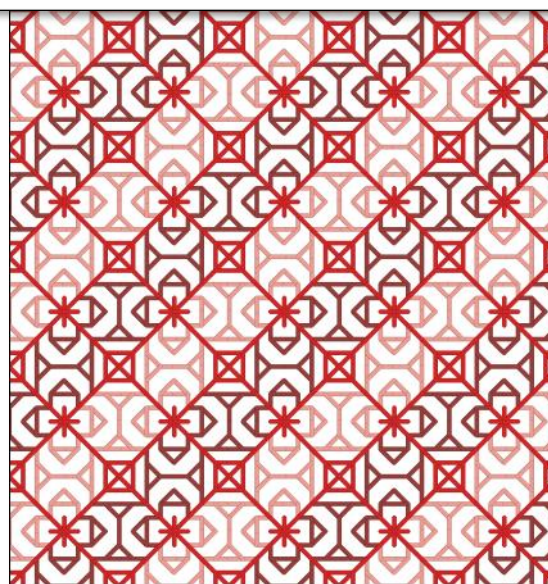
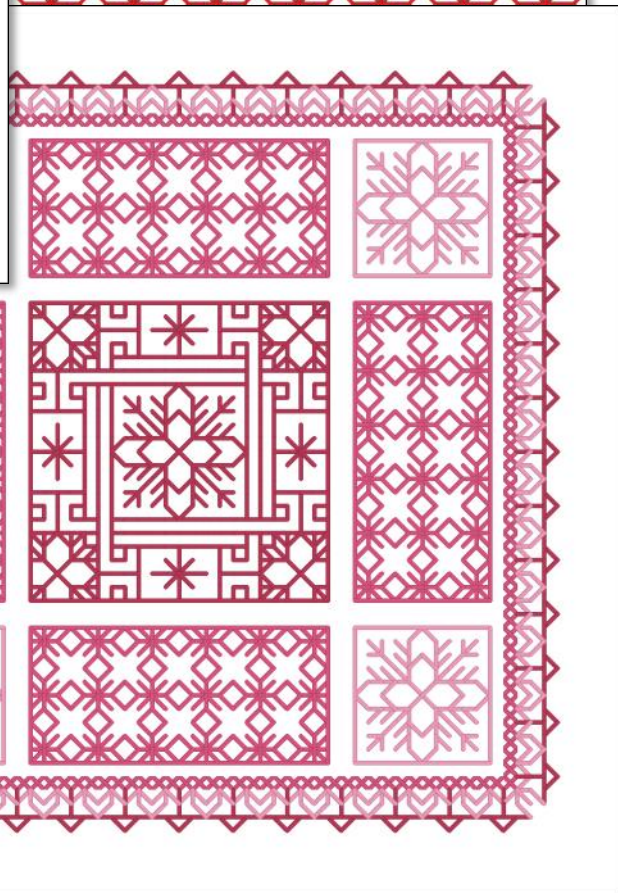
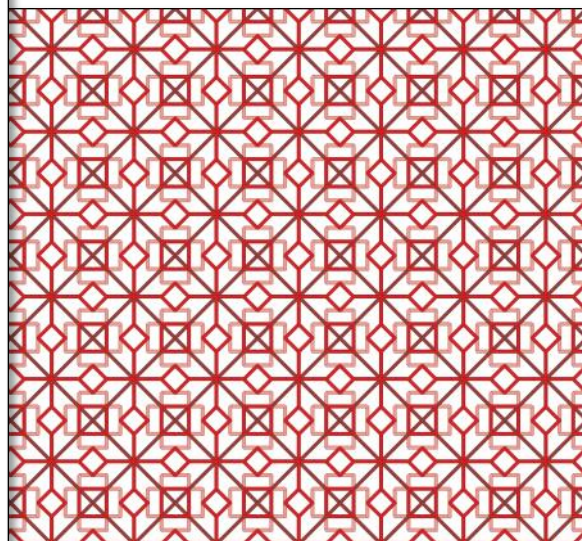
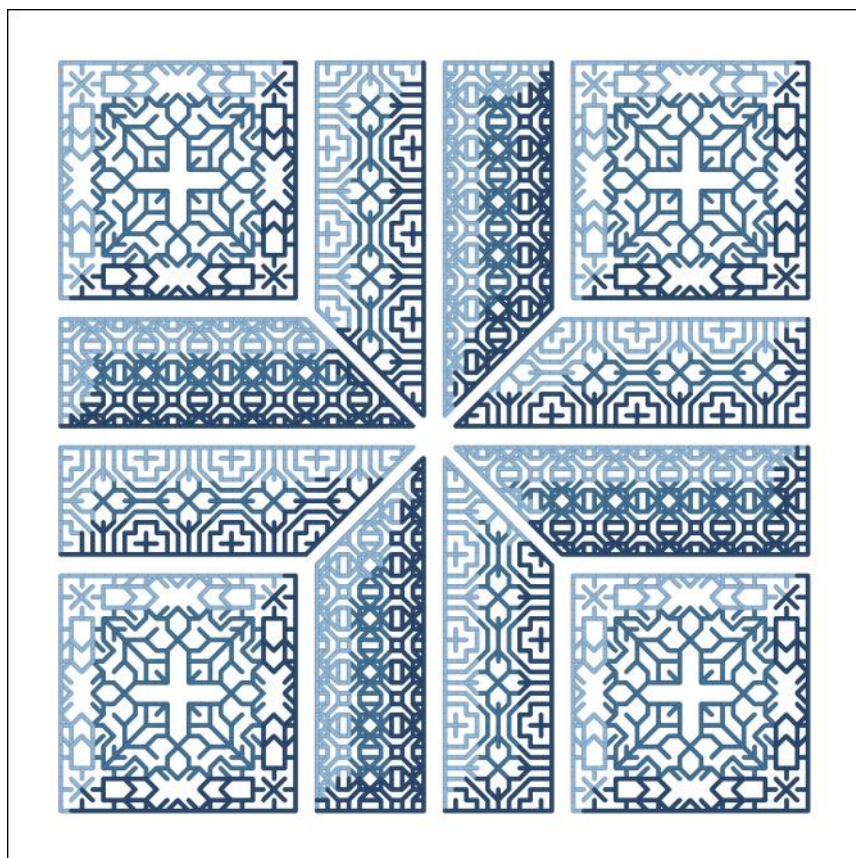
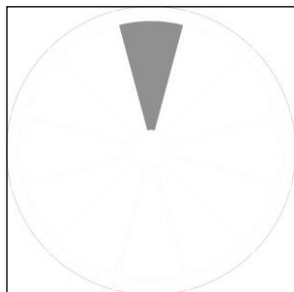




COLOR HARMONY EXAMPLES

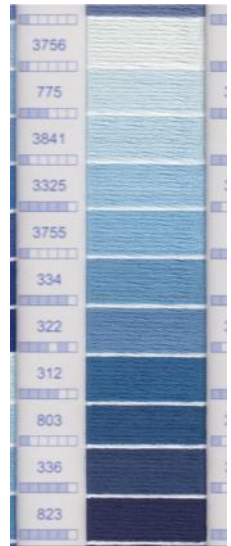
MONOCHROMATIC



COLOR HARMONY: MONOCHROMATIC



The MONOCHROMATIC color harmony just takes various shades and tints of the main color - making it a very subtle and calming color palette. It takes a single color, and just expands it as needed. It's the most simple of all the color harmonies, because you can take any manufacturer thread card to confirm the colors. For instance, here's the portion of the card I used to take a look at NBB-2315. Thread 3755 is the main color, so I chose 322 and 3841 for the shade and tint.



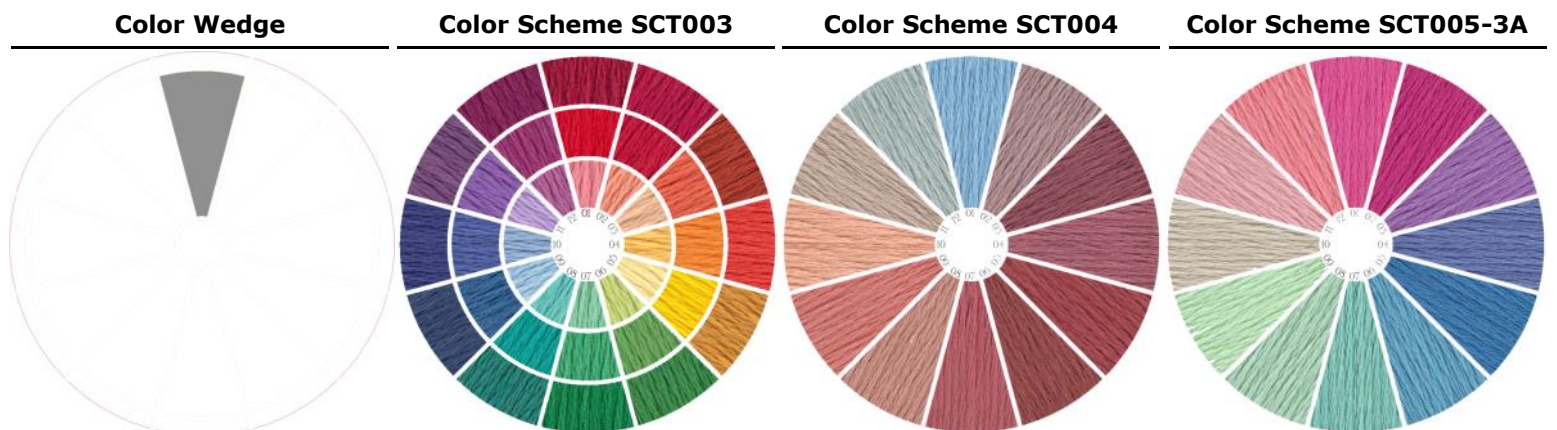
This color harmony gives the most calming and clean aesthetic to a project. You want to ensure that the colors give enough variation, however, or it may become monotone.

Stop by our website at <https://stitchinspiration.com/category/simply-color/> and find other color / thread schemes to play with.

Download the web cards for BOTH the color harmonies, as well as the thread schemes—and play to your hearts content!

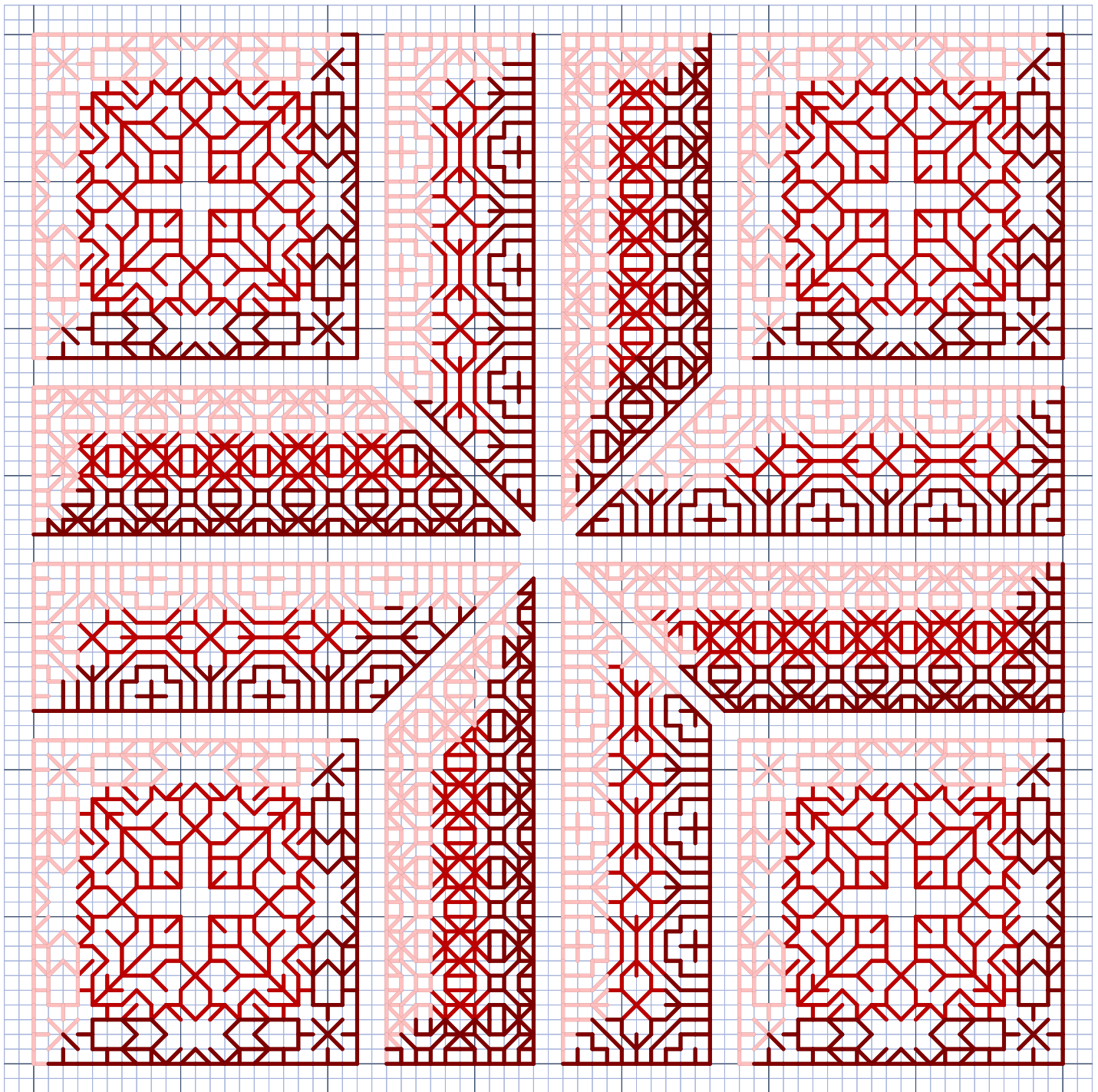
You have NO limit to how you can play with color, and can put your own touch to ALL your needlework projects.

Color Wedge	SCT003	SCT004	SCT005-3A
01 A	666	3755	602
02 B	349	3861	718
03 C	721	315	553
04 D	741	3726	3807
05 E	444	3721	517
06 F	702	3858	518
07 G	911	3722	993
08 H	3812	407	564
09 I	312	3778	13
10 J	792	3771	644
11 K	208	3782	224
12 L	34	927	760
01A S	816	322	600
01B C	760	3841	604



This pattern provided for FREE from Sally Rudkin and Stitchin'spiration for your personal enjoyment. Needlework shops are free to distribute this chart to their customers and classes as they wish. Also, it is available to stitchers that stitch for charity. CHART MUST NOT BE SOLD OR PROFIT MADE FROM IT, OTHER THAN FOR CHARITABLE MEANS.




NBB-2315— BASED ON COLOR WHEEL SCT004

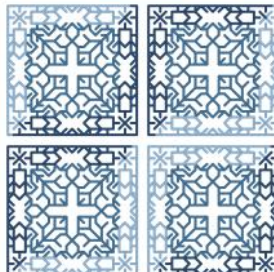


PROJECT SIZE

Stitches	70 x 70
14 Count	5" x 5"
16 Count	4-3/8" x 4-3/8"
18 Count	3-7/8" x 3-7/8"
22 Count	3-1/8" x 3-1/8"

Color Wedge

01	A		01A	B	
			01B	C	

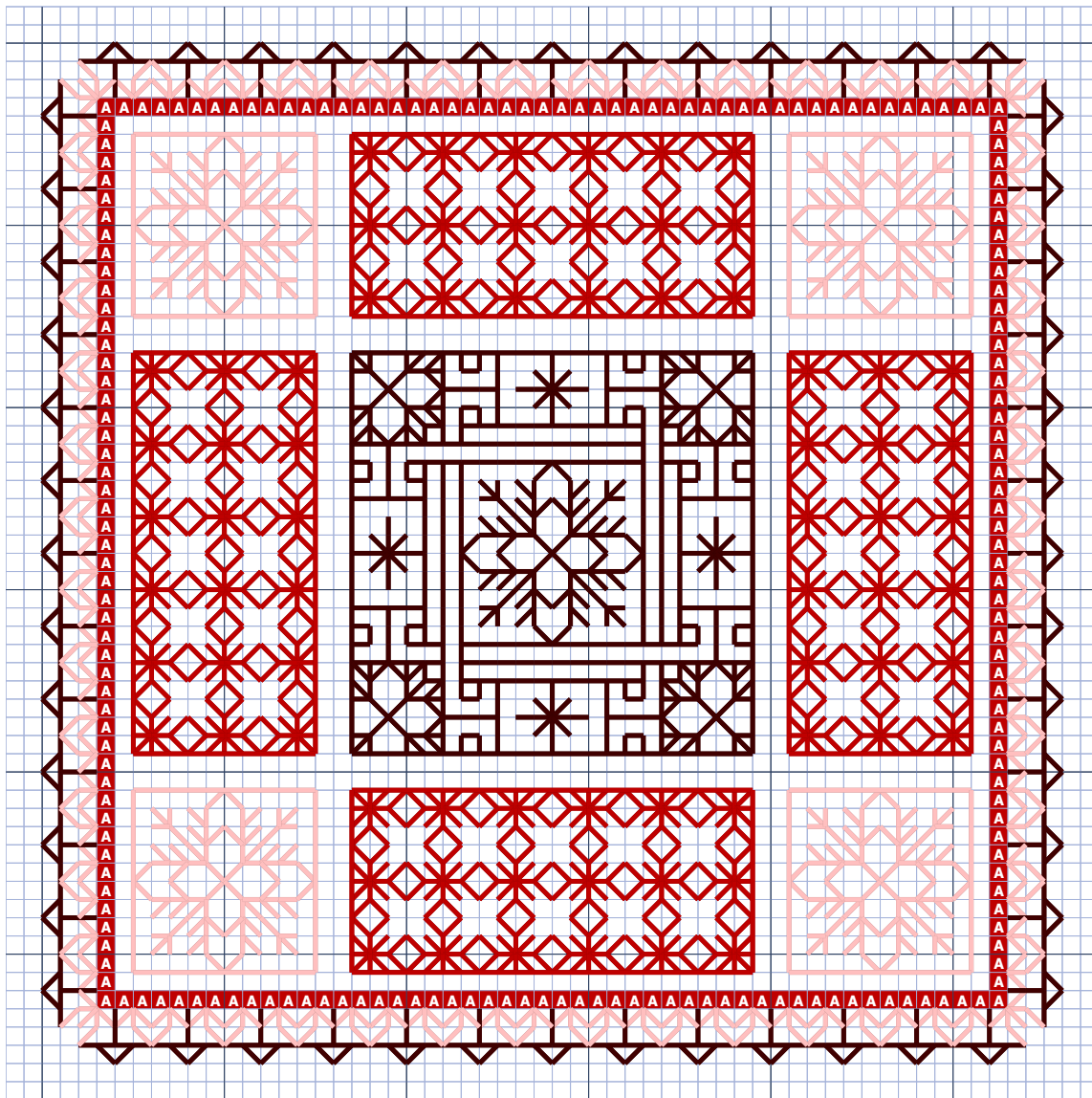


To get a 3-D look, stitch as above, stitching the lighter and darker color as shown. This works well in any color, and really gives the sampler a stunning look! Try the 3-D look to any block, by stitching the lighter and darker threads along the sides.

Rotate the block around 180 degrees, and instead of the square looking like the block comes out, it looks like it goes in.

This pattern provided for FREE from Sally Rudkin and Stitchin'spiration for your personal enjoyment. Needlework shops are free to distribute this chart to their customers and classes as they wish. Also, it is available to stitchers that stitch for charity.
 CHART MUST NOT BE SOLD OR PROFIT MADE FROM IT, OTHER THAN FOR CHARITABLE MEANS.







NBB-6001— BASED ON COLOR WHEEL SCT005-3A



PROJECT SIZE

Stitches	56 x 56
14 Count	4" x 4"
16 Count	3-1/2" x 3-1/2"
18 Count	3" x 3"
22 Count	2-1/2" x 2-1/2"

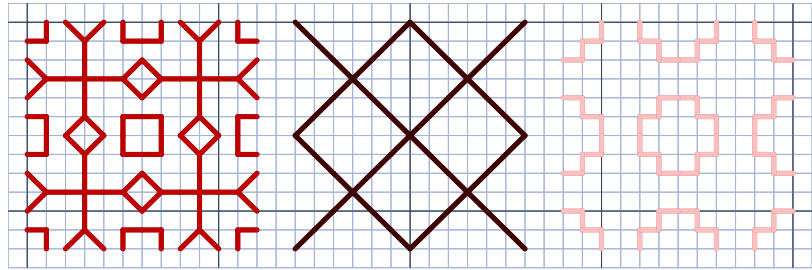
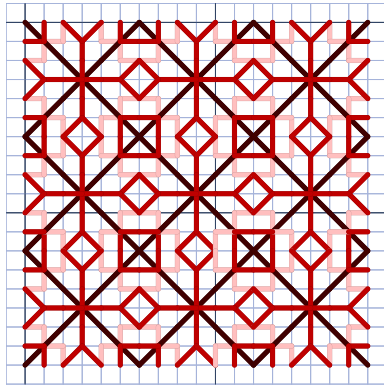
Color Wedge

01		
01A		
01B		

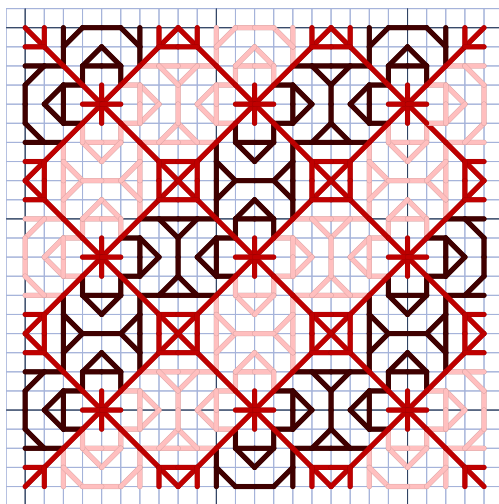
The main color (01) I used to surround the design, and stitch the 4 rectangles along the outside. I used the darker and lighter colors to accent the design. I mixed all 3 of the colors with the border, to pull them all together.

This pattern provided for FREE from Sally Rudkin and Stitchin'spiration for your personal enjoyment. Needlework shops are free to distribute this chart to their customers and classes as they wish. Also, it is available to stitchers that stitch for charity.
 CHART MUST NOT BE SOLD OR PROFIT MADE FROM IT, OTHER THAN FOR CHARITABLE MEANS.

FILLS — BASED ON COLOR WHEEL SCT003

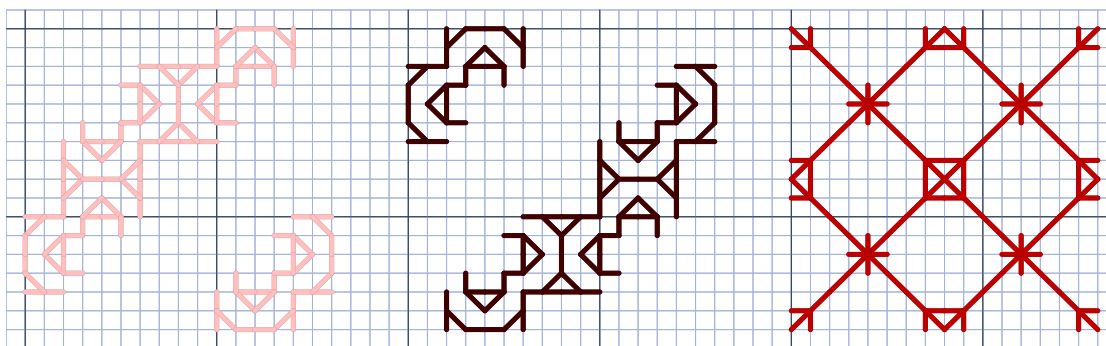


Take the fill, and break it down into 3 repeats as shown above. Then stitch each in one of the 3 colors. Breaking it down this way, makes it easy to stitch, as it's all repetitive. Play around with the color, and the placement of the colors. It all makes a difference. Just experiment with how you stitch the blackwork fills, and they'll never get old.






This version of the fill gives it a 3-Dimensional look again. Playing with the lighter and darker colors gives it a subtle look, but also pops it off the thread.

To stitch this one, I'd start with the lighter color, and stitch that row. Then, I'd stitch the darker color. I'd stitch row by row, at least until you are comfortable with them. Then, finally, I'd stitch the lines last, putting them on top.



Color Wedge

- 01  —
- 01A  —
- 01B  —

This pattern provided for FREE from Sally Rudkin and Stitchin'spiration for your personal enjoyment. Needlework shops are free to distribute this chart to their customers and classes as they wish. Also, it is available to stitchers that stitch for charity.

CHART MUST NOT BE SOLD OR PROFIT MADE FROM IT, OTHER THAN FOR CHARITABLE MEANS.



STITCHIN'SPIRATION



POST OFFICE BOX 1571
MECHANICSVILLE, VA 23116 USA
(804) 368-7751
ADMIN@STITCHINSPIRATION.COM
WWW.STITCHINSPIRATION.COM

© 2021 DESIGNS BY SALLY RUDKIN ALL RIGHTS RESERVED.