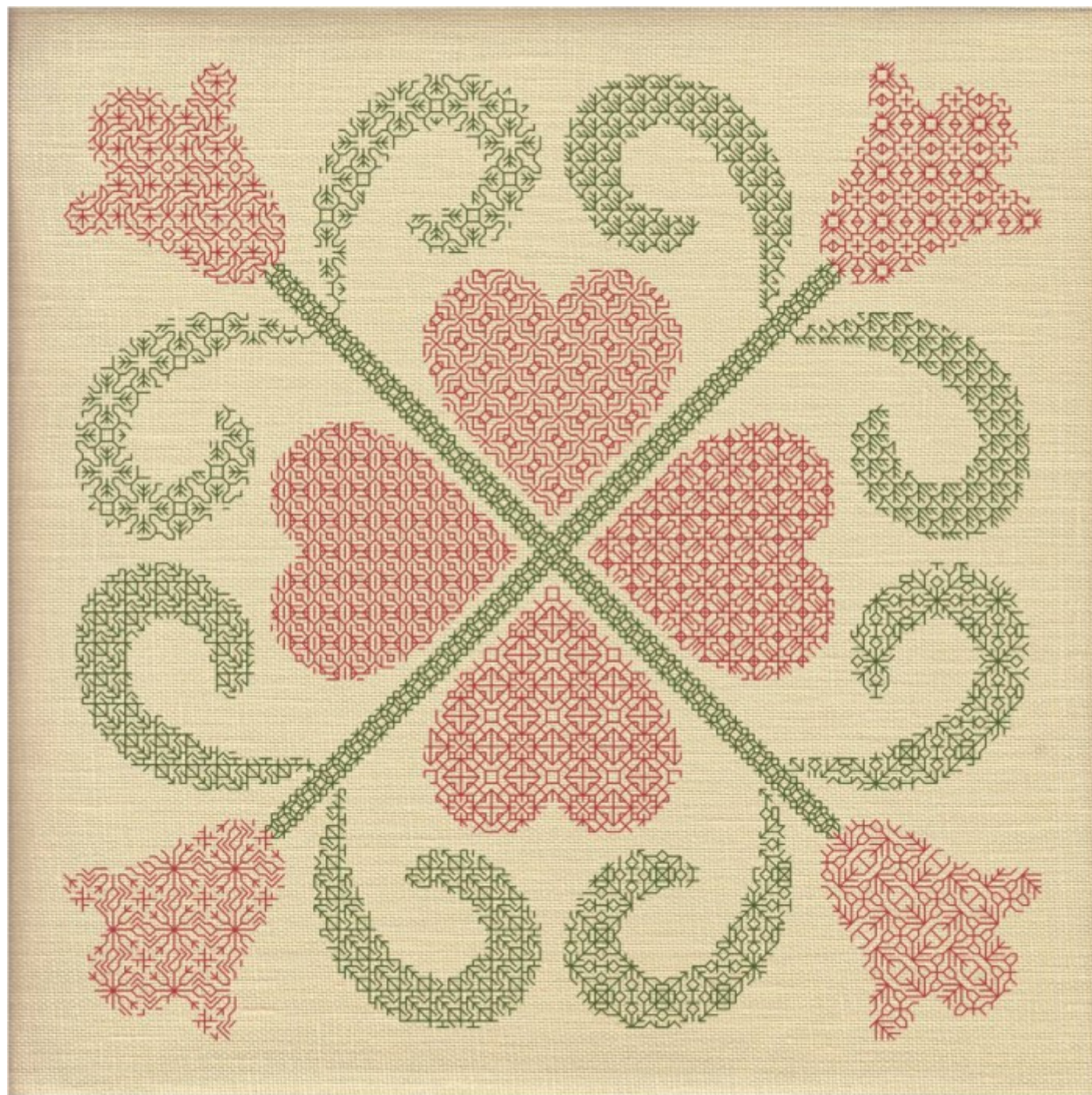




STITCHIN'SPIRATION



BALTIMORE ALBUM  
HEARTS & TULIPS SAMPLER



DESIGNS BY SALLY RUDKIN

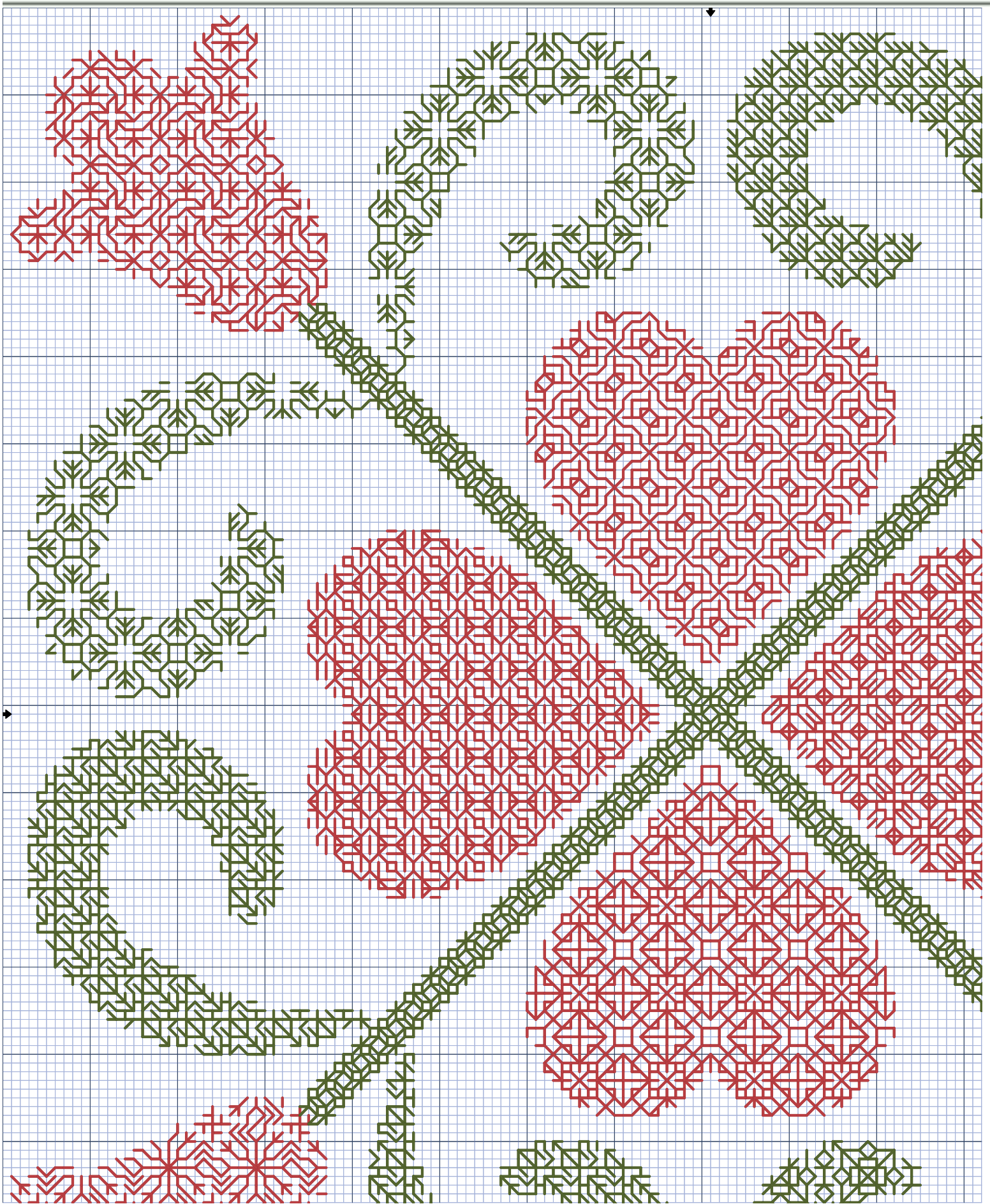
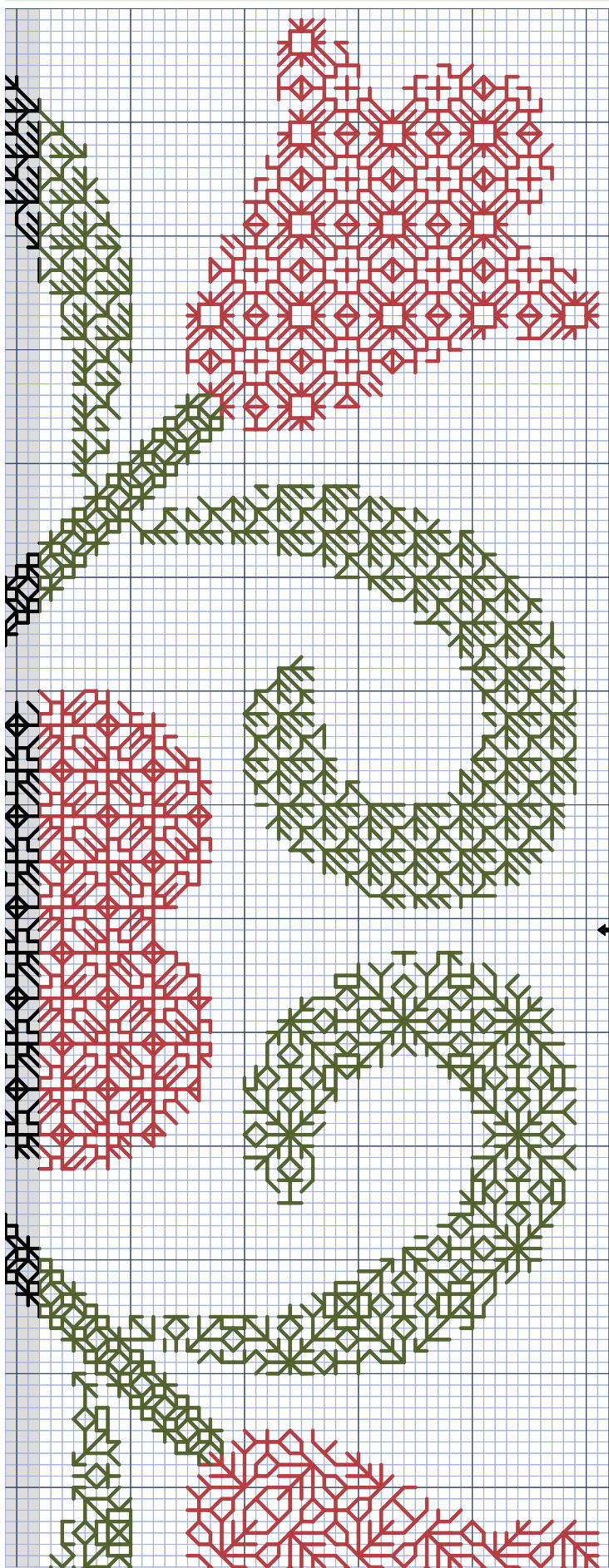


Chart #1



**Chart #2**

Blackwork is historically done in black thread. In today's world where we have the full range of colors, as well as the hand-dyed and variegated threads, there are countless possibilities for your project.

Do your blackwork piece in all 1 thread, or use multiple colors for the various parts of it - that's your own choice! Customize it with color as you wish.

Also, there's no set rule as to the number of strands or thickness of thread you need to use. Try out a couple of options on a sample piece of your chosen fabric - you decide how fine or how bold you want the stitching to be. Use a combination by using 2 strands for the borders of your sampler areas, with 1 strand for the fills themselves.

Shaded portion indicates overlap from Chart #1.

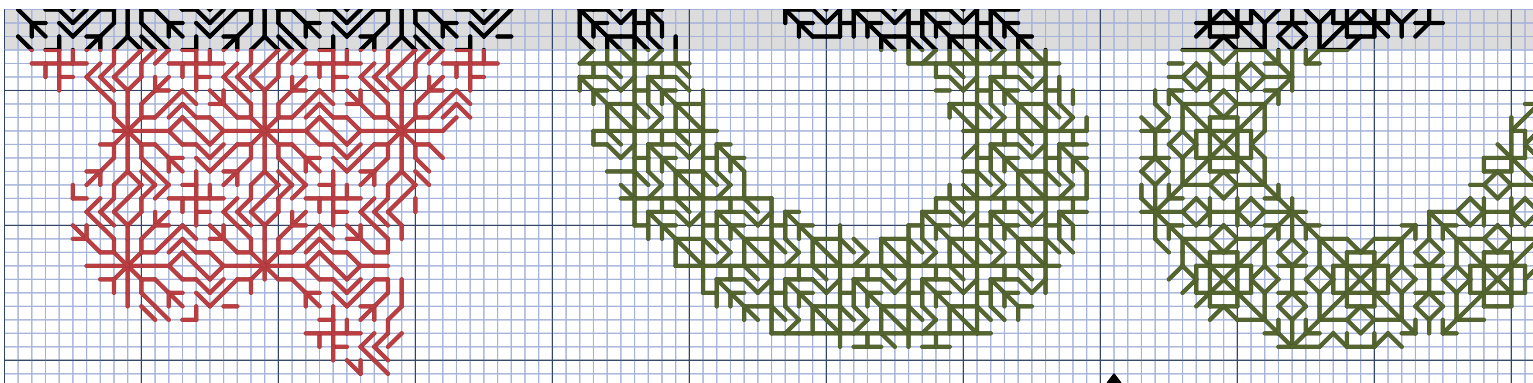


Chart #3

Shaded portion indicates overlap from Chart #2.

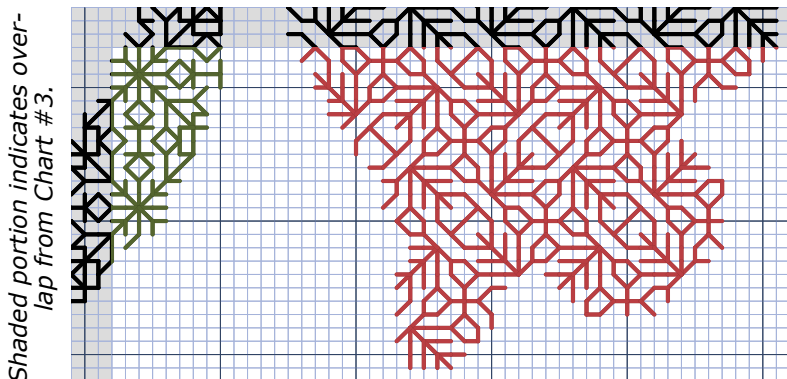




Chart #4

Shaded portion indicates overlap from Chart #3.

**PROJECT SIZE**

<b>Stitches</b>	160 Square
<b>14 Count</b>	11-3/8" Square
<b>16 Count</b>	10" Square
<b>18 Count</b>	8-7/8" Square
<b>22 Count</b>	7-1/4" Square

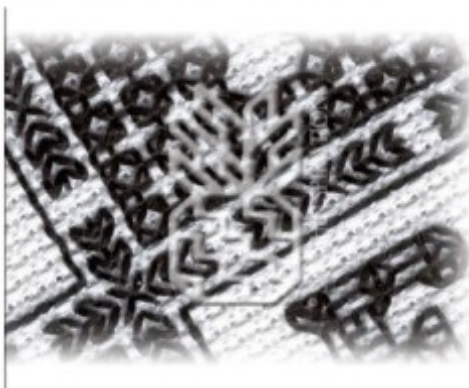
**GENTLE ARTS THREAD USAGE**




	190	Forest Glade
	7019	Pomegranate

**MODEL INFORMATION**


<b>Thread Shown</b>	Gentle Arts Sampler Threads—Cotton Embroidery Floss (3—5 yd skeins needed of each thread)
<b>Back Stitching</b>	All stitching in 1 strand.

STITCHIN'SPIRATION A COLORFUL WORLD OF BLACKWORK



 /STITCHINSPIRATION  
 /SAMRUDKIN  
 @STITCHINSPIRED

**STITCHIN'SPIRATION**

 POST OFFICE BOX 1571  
 MECHANICSVILLE, VA 23116 USA  
 (804) 368-7751  
 ADMIN@STITCHINSPIRATION.COM  
 WWW.STITCHINSPIRATION.COM

© 2004-2014 DESIGNS BY SALLY RUDKIN ALL RIGHTS RESERVED.