



STITCHIN'SPIRATION



GETTING LOST IN A BLACKWORK MAZE



DESIGNS BY SALLY RUDKIN

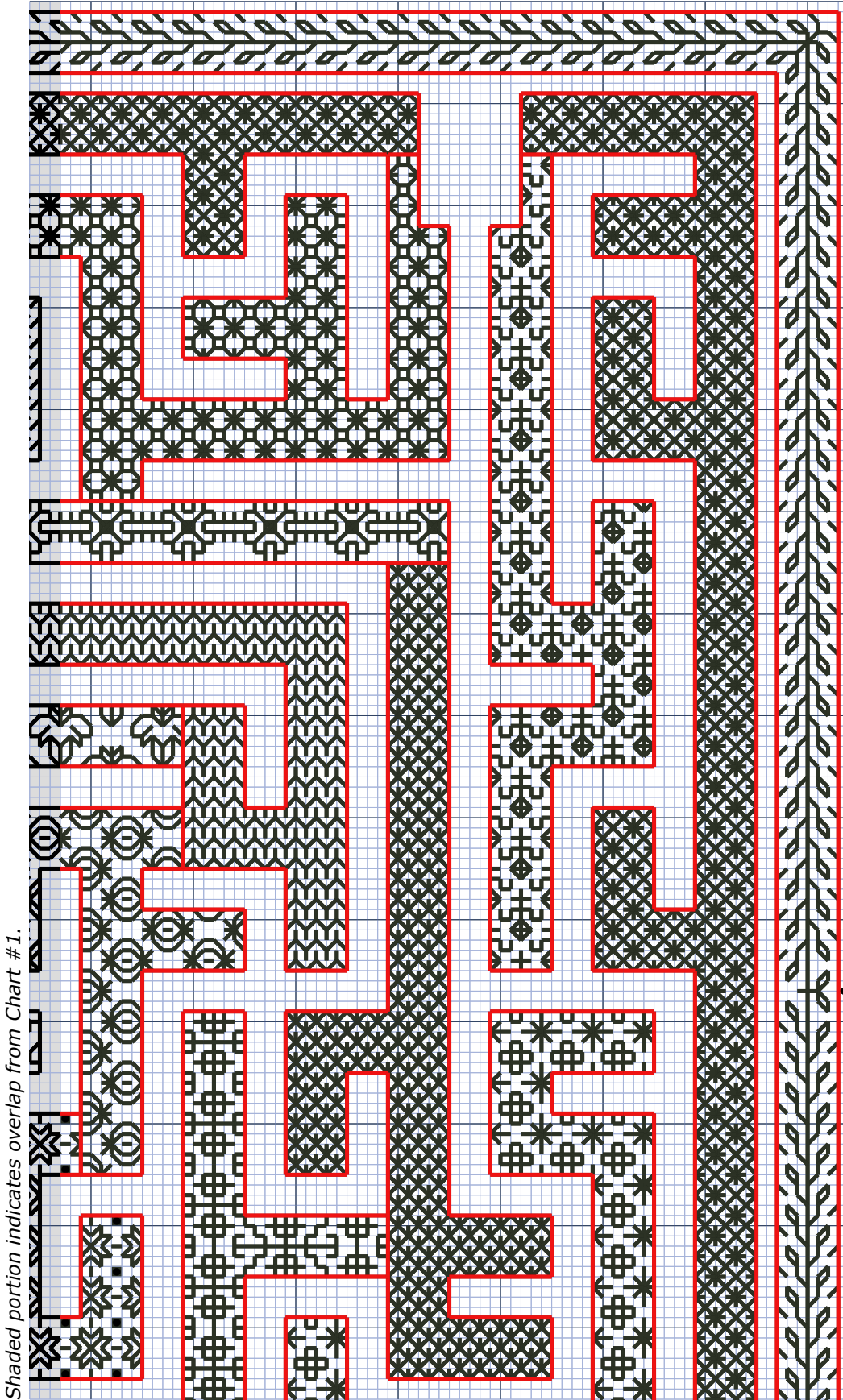


Chart #2

CHART LAYOUT

#1	#2
#3	#4

Enjoy getting lost in this wonderful puzzle, which showcases over 25 different fill patterns. Some fills are traditional, while some fills are of my own design.

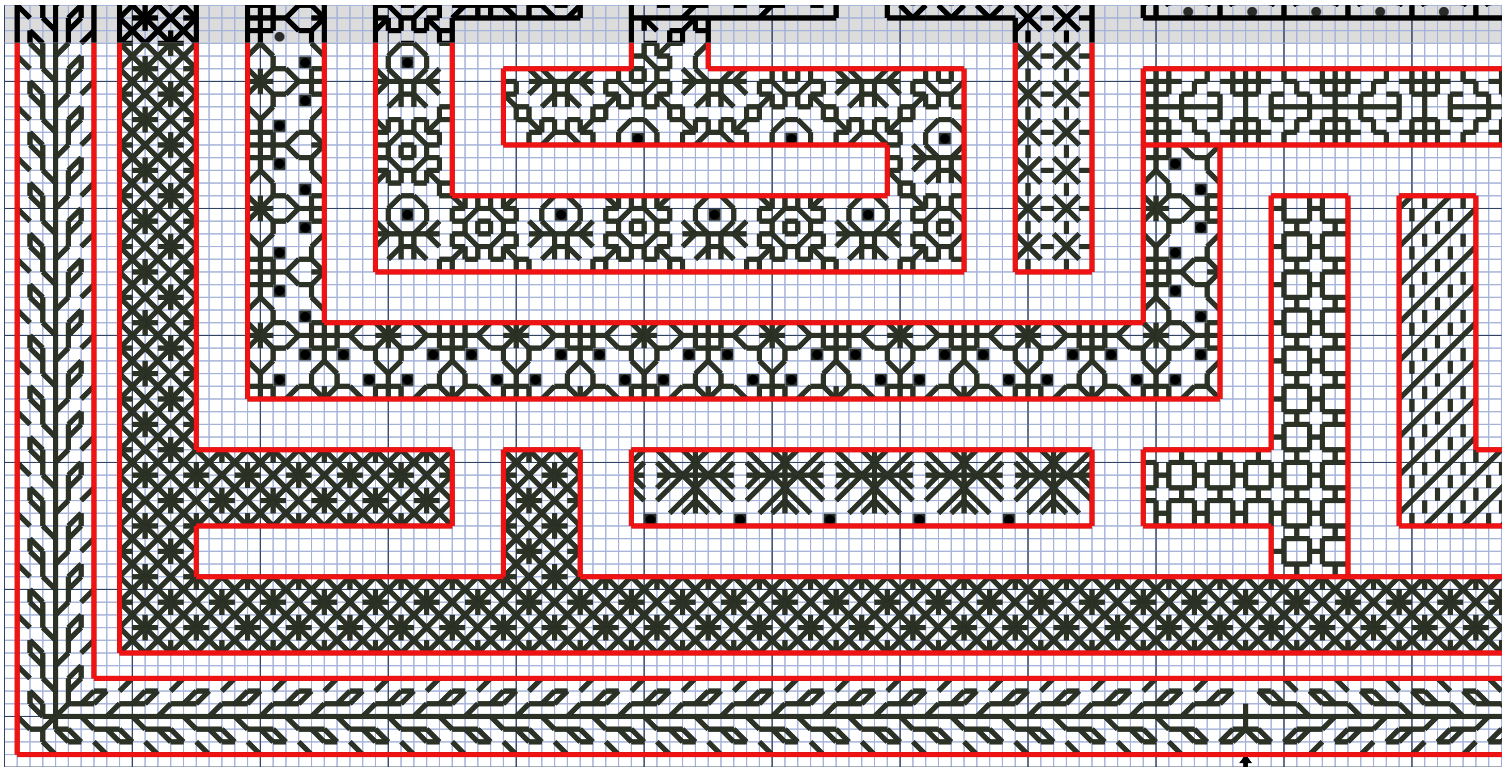
Blackwork is historically done in black thread. In today's world where we have the full range of colors, as well as the hand-dyed and variegated threads, there are countless possibilities for your project.

Do your blackwork piece in all 1 thread, or use multiple colors for the various parts of it - that's your own choice! Customize it with color as you wish.

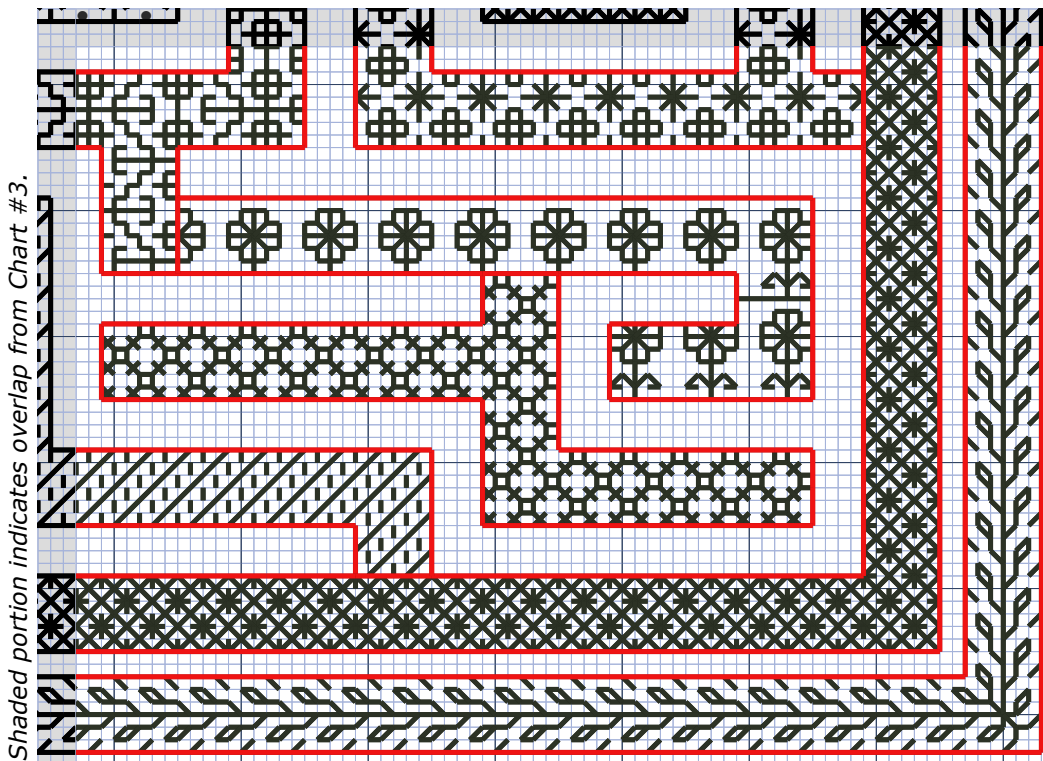
Also, there's no set rule as to the number of strands or thickness of thread you need to use. Try out a couple of options on a sample piece of your chosen fabric - you decide how fine or how bold you want the stitching to be. Use a combination by using 2 strands for the borders of your sampler areas, with 1 strand for the fills themselves.

Shaded portion indicates overlap from Chart #1.

Shaded portion indicates overlap from Chart #1





Shaded portion indicates overlap from Chart #2



Shaded portion indicates overlap from Chart #3.

Chart #4

THREAD USAGE

-  Single Strand
-  Double Strand

Stitcher's Option

As stated above, you can use 2 strands of floss or thread should you want thicker borders.

Chart #3

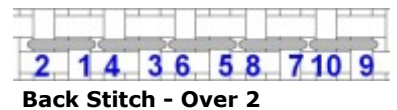
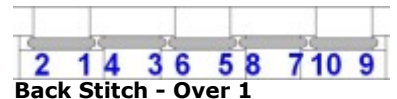
MODEL INFORMATION

Fabric	Charles Craft Aida (18 Count) Color: White
Thread	DMC® 6-strand cotton embroidery floss Color: 310 Black (2 skeins)
Back Stitch	Stitched in 1 strand
Credits	Kim Carter, Model Stitcher
Framing	Compliments of Three Sisters Needleart, Woodbridge, VA


PROJECT SIZE

Stitches	192 Square
14 Count	13-5/8" Square
16 Count	12" Square
18 Count	10-5/8" Square
22 Count	8-5/8" Square

STITCH DIAGRAMS



STITCHIN'SPIRATION


 POST OFFICE BOX 1571
 MECHANICSVILLE, VA 23116 USA
 (804) 368-7751
 ADMIN@STITCHINSPIRATION.COM
 WWW.STITCHINSPIRATION.COM
 © 2004 DESIGNS BY SALLY RUDKIN ALL RIGHTS RESERVED.

 /STITCHINSPIRATION

 /SAMRUDKIN

 @STITCHINSPIRED